

the linear lighting people

mmj  
lighting 96 ltd

# green and affordable!

MMJ Lighting has come up with a retrofit program using the **LV LED mini flex™**: 1.2w@12v per module together with the **LV TRD LED™** 12v power supply: 10w, 25w, 60w, 100w @ 12v/120v

## simple

- Remove the festoon lamp and replace it with our LV LED mini flex™ module.
- Replace the existing low voltage transformer with our LV LED TRD™ 12v power supply.

Replacing the incandescent festoon lamp with the mmj96 LV LED mini flex™ module and LV TRD LED power™ supply will:

- Significantly reduce heat and power consumption;
- Offer longer lamp life – up to and exceeding 30,000 hours, and
- Eliminate the costly replacement of complete lighting systems.

The mmj96 LV LED mini flex™ module will easily retrofit most systems.

For further information, see the attached specifications sheets or contact our customer service manager for pricing and samples.

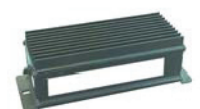
Melanie Delson

[mel@mmjlighting96.com](mailto:mel@mmjlighting96.com)

905.479.0788 xt: 222



LV LED mini flex™



LV LED TRD™


**Project specification: D625LED™ LV Led mini flex LV LED modules:** L500LED-1.2w, L501LED-0.72w, L502LED-2.16w

fixture type

## green and affordable



 A182 p.feed [plan view]

 15A maxi load #12 gauge /67 strand capacity

### Lighting specifications:

**A:** Socket height -0.52" [ 13mm ] , Socket width - 0.48" [12mm] .

**B:** A182 power feed - capacity 2 # 12 wires / 67 strand cable

mmj96 number	LV LED spacing	L500LED	L501LED	L502LED
<input type="checkbox"/> D625LED™ 2.4" o.c.	Five LVLED's per foot.	<input type="checkbox"/> 1.2w	<input type="checkbox"/> 0.72w	<input type="checkbox"/> 1.0wHB
<input type="checkbox"/> D625LED™ 3.0" o.c.	four LVLED's per foot.	<input type="checkbox"/> 1.2w	<input type="checkbox"/> 0.72w	<input type="checkbox"/> 1.0wHB
<input type="checkbox"/> D625LED™ 4.0" o.c.	three LVLED's per foot.	<input type="checkbox"/> 1.2w	<input type="checkbox"/> 0.72w	<input type="checkbox"/> 1.0wHB
<input type="checkbox"/> D625LED™ 6.0" o.c.	two LVLED's per foot.	<input type="checkbox"/> 1.2w	<input type="checkbox"/> 0.72w	<input type="checkbox"/> 1.0wHB

### CUSTOM:

D625LED™ \_\_\_\_" o.c. L \_\_\_\_ LV LED's \_\_\_\_w each \_\_\_\_ w/per foot

### LV LED Lamp specifications:

#### LV LED White :

LV LED number type watts ea. volts ea colour rated hours

- L500SMDLED-3K™ festoon 1.2w 12vDC 3200K 50,000
- L500SMDLED-5K™ festoon 1.2w 12vDC 5000K 50,000
- L501SMDLED-3K™ festoon 0.72w 12VDC 3200K 50,000
- L501SMDLED-5K™ festoon 0.72w 12vDC 5000K 50,000
- L501LED colours festoon 0.72w 12vDC colours 50,000
- red,  blue,  green,  amber.
- L503LEDHB high brightness 2.16wHB 12VDC 3200K 50,000
- L503LEDHB high brightness 2.16wHB 12vDC 5000K 50,000

### Accessories:

D628a LV LED rotatable lamp holder  1w350mA  3w700mA

### NEW PRODUCT CONTACT MMJ96 for additional information

- D629 – End cap – included by mmj 96 with each run required.
- D630 – Mounting Clip – minimum one per foot.
- A181 – Two-sided Tape.

D625LED™ lv mini flex shop drawing 6.5.09 c RU us



back lit glass bar top

Extrusions and Angle brackets page four of four

Power supplies page four of four

MAXIMUM LINEAR RUN:

CONTACT MMJ96 CUSTOMER SERVICE

Outdoor use IP67:

Outdoor use IP68: CONTACT MMJ96

### Photometric curve for D625.L500LED

L500LED – 1.2w 12vDC



2800K  3200K  5000K

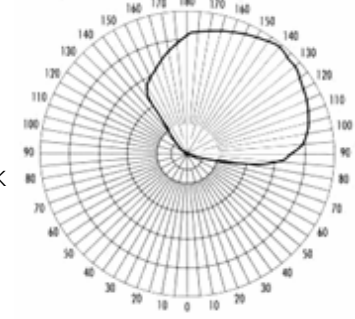
L501LED –0.72W



2800K  3200K  5000K  
 red,  blue,  green,  amber

L503LED – 2.16w 12vDC

high brightness  
 2800K  3200K  5000K



### Note:

Any Changes or modifications to mmj lighting 96 ltd lighting fixtures, must be done in themmj lighting 96 ltd factory. Any modifications or changesdone in the field will void all warranties and approvals.

Job Name:

Job Nbr:

Tag:

Notes:

note: site measurements required

# shop drawing

project specification

fixture type

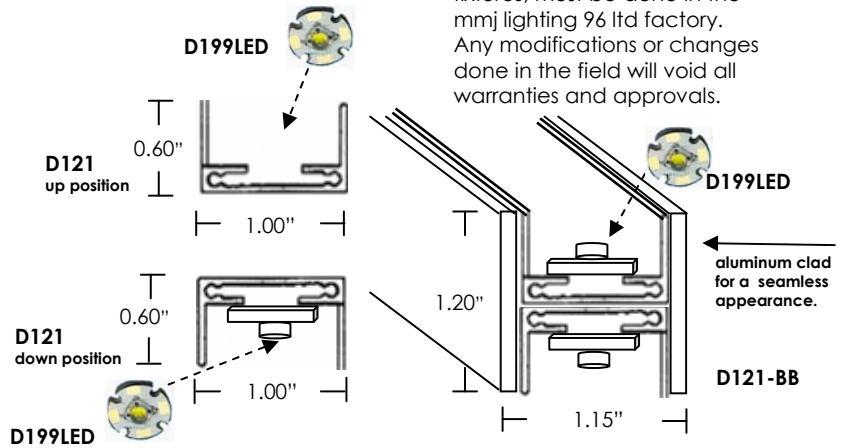
**D121SMD.LED and D121-BB-S SMD.LED suspension**

Job Name:  
Job Nbr:  
Tag:  
Distributor:  
Electrician  
Engineer:  
Interior Design:  
Architect:  
note: site measurements required

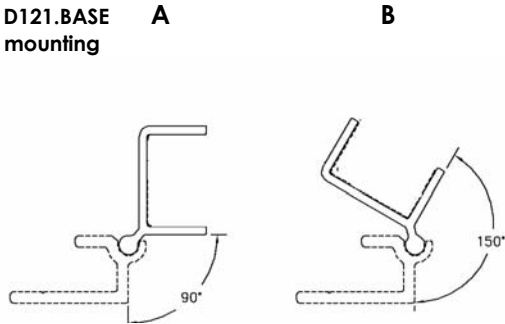
Note:  
Any Changes or modifications to mmj lighting 96 ltd lighting fixtures, must be done in the mmj lighting 96 ltd factory. Any modifications or changes done in the field will void all warranties and approvals.

**D121 Low profile aluminum extrusions: remote power supply only.**

- D121 aluminum extrusion:
- D121-BB back to back extrusion:
- suspensions [ D121-BB-S ]
- D121 extrusion for D199LED
- D121R extrusion for D199LED  left  right
- D121-c lens as illustrated below.



**D121.BKT – D121.BASE adjustable mounting bracket:**



**LV LED starbrite™ Light sources:**

**L199LED:**

- D199LED-1w use: 350mA power supply
- D199LED-3w use: 700mA power supply



**L500SMD-LED [not illustrated]**

- 2800K
- 3200K
- 6000K

**LV Led spacing:**

- 1.5"o.c.,  2.0"o.c.,  3.0"o.c.,  4.0"o.c.,
  - \_\_\_\_\_o.c. **CUSTOM**
- refer to LV LED power supply shop drawing

**Beam Lens: [ not illustrated ]**

- BL 100 - 10 10° narrow spot lens. - **CUSTOM**
- BL 100 - 30 25° narrow flood lens.- **STANDARD**
- BL 100 - 45 45° flood lens. - **CUSTOM**
- BL 100 -106 106° wide flood
- BL 100 - 15x30 15° x 30° elliptical beam lens – **CUSTOM**

**Power supplies:**

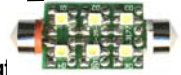
Consult mmj lighting 96 ltd.



**D625LED Light strip potted**  
Spacing:  2.4"  3.0"  4.0"  
 6.0"  **CUSTOM**

**L500LED- 1.2w module**

- 2800K
- 3200K
- 6000K
- L500SMD-LED [not illustrated]**
- 2800K
- 3200K
- 6000K



**D121-C lens**

**D121 BKT [adjustable]**

**D121 BASE locking set screw**

green linear adjustable and suspended

**Extrusions and LV Led profiles:**

- D121-BB-S suspension**


Note:  
not illustrated with aluminum side clad.

- D121 extrusion -**
- up position
- down position

- D121 extrusion**
- D121bkt – adjustable**
- D121base**

**Custom;**

Custom lengths available

D121LED and D121-BB-S shop drawing 8.8.07 

150 ferrier street, unit 2, markham, ontario L3R 3K3  
T 905 479 0788 F 905 479 7117 E sales@mmjlighting96.com

www.mmjlighting96.com

**mmj**  
lighting 96 ltd

project specification LV LED mini flex power supplies and Extrusions

fixture type

## power supplies:

**ET6012M, ET7512M,  
ET10012M, ET15012M**

Specifications:	length	width	height	watts	secondary	primary
<input type="checkbox"/> ET 6012M	8.5"	4.5"	1.50"	60w	12v	120v-5t
<input type="checkbox"/> ET 7512M	5.1"	3.8"	1.50"	75w	12v	120v-50/60HZ
<input type="checkbox"/> ET 10012M	6.3"	3.8"	1.50"	100w	12v	120v-50/60HZ
<input type="checkbox"/> ET 15012M	7.8"	3.9"	1.50"	150w	12v	120v-50/60HZ

Specifications:	length	width	height	watts	secondary	primary
<input type="checkbox"/> ET 32012M	8.5"	4.5"	1.50"	320w	12v	120v-50/60HZ

### Dimmable power supplies:

<input type="checkbox"/> LV Led Mag100	6.48"	2.59"	2.33"	100w	12v	120v-60hz
<input type="checkbox"/> LV Led Mag 50	5.63"	2.14"	2.0"	50w	12v	120v-60hz

### Note:

Housing includes wiring enclosure for 120v and 12v terminals .  
Dimensions as noted above.

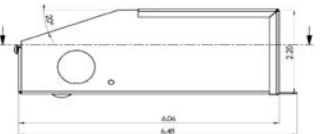
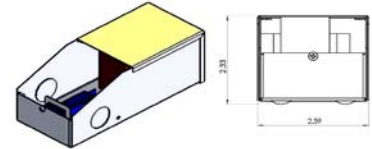
C-UL and UL Approved.[ power supply listed 7D 53]

**Note:** This power supply is to be installed with mmj lighting 96 ltd lighting products  
as a component completing the C-US approval

ELECTRICAL INSTALLATION INSTRUCTIONS SUPPLIED BY: MMJ LIGHTING 96 LTD , MUST BE FOLLOWED.FAILED TO DO SO WILL VOID ANY APPROVALS.

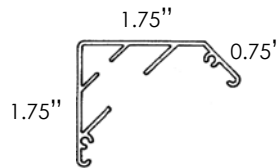


ET 32012M



LV Led Mag50 / LV Led Mag 100

## extrusions:

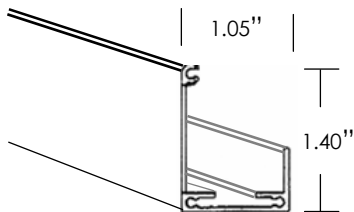


D115 extrusion

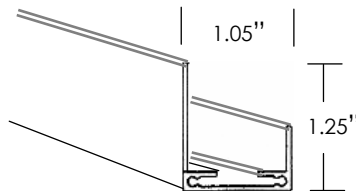
showcase



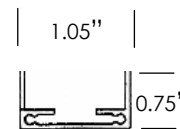
cove



**D121**  
full reflector



**D121.1**  
3/4 reflector



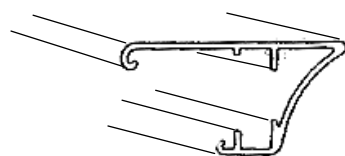
**D121.2**  
low extrusion

### D121c lens

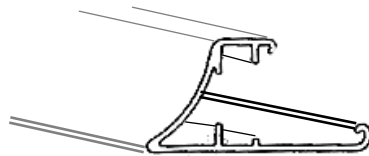
- D121.1
- D121.2

### D121c lens

not illustrated

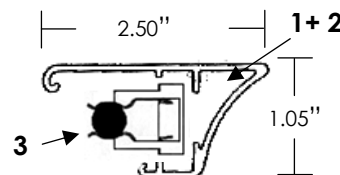


**D119**  
under a shelf



**D119.U**  
above a cabinet

**Under cabinet, Above cabinet Showcase and Display**



- beveled front reflector  
branch through wire access
1. branch through wire access
  2. integral power supply, end feed only.
  3. LV LED mini flex strip

Job Name:  
Job Nbr:  
Tag:  
Notes:

note: site measurements required

LV LED FLX power supplies and extrusion page three c 