

shop drawing

project specification

D119 extrusion and lighting

fixture type

Job Name:
Job Nbr:
Tag:
Distributor:
Electrician
Engineer:
Interior Design:
Architect:
note: site measurements required

Note:

Any Changes or modifications to mmj lighting 96 ltd lighting fixtures, must be done in the mmj lighting 96 ltd factory. Any modifications or changes done in the field will void all warranties and approvals.

typical socket assembly:

LV LED:

D185 ___LED's___" o.c.
[individual 1w12v, 3w12v LEDS]
D185-0.5"o.c., D185- 1.0"o.c.
[cw D801 LED lighting]

LVT5:

D186- 8, D186 - 14, D186-21
D186-28, D186 - 35

LVMF

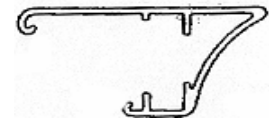
D187 [D625 3"o.c.]
D187 [D626 4"o.c.]

LVTS:

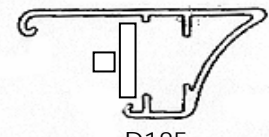
D188 - 3" [D139b - 3" o.c.]
D188 - 4" [D139b - 4" o.c.]

LVT2

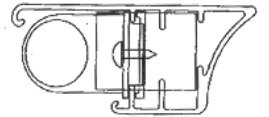
D189 - 8, D189 - 11, D189 - 13



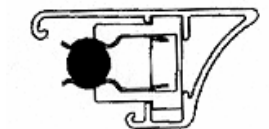
D119 Extrusion only



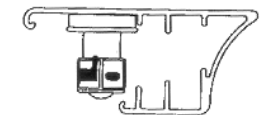
D185



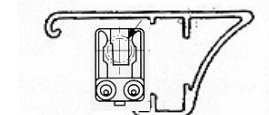
D186



D187



D188



D189



D119.D185, D186.D187. D188. D189 1.20.04 c

150 ferrier street, unit 2, markham, ontario L3R 3K3
T 905 479 0788 F 905 479 7117 E sales@mmjlighting96.com

www.mmjlighting96.com

mmj
lighting 96 ltd