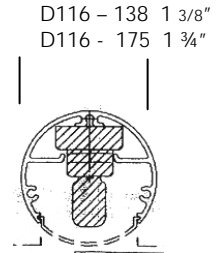


project specification

fixture type      D116 extrusion and lighting profiles    D116 – 138 1 3/8" diameter , D116 – 175 1 3/4" diameter

Job Name:  
 Job Nbr:  
 Tag:  
 Distributor:  
 Electrician  
 Engineer:  
 Interior Design:  
 Architect:  
 note: site measurements required

Note:  
 Any Changes or modifications to mmj lighting 96 ltd lighting fixtures, must be done in the mmj lighting 96 ltd factory. Any modifications or changes done in the field will void all warranties and approvals.



D116  
 Extrusion only



D160  
 LVT5

Vertical or horizontal  
 showcase extrusion  
 complete with LVT5  
 lamp.

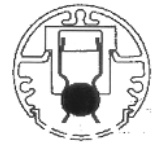
**Extrusion Number :**    D 116 - \_\_\_\_

**Overall Length :**        \_\_\_\_inches

**Typical Socket Assembly:**

**LVT5:**

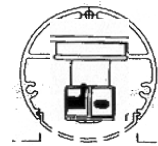
- D160 - 8, \_\_\_\_" over all length
- D160 -14, \_\_\_\_" overall length
- D160 -21 \_\_\_\_" overall length
- D160 -28, \_\_\_\_" overall length
- D160 -35 \_\_\_\_" overall length



D161  
 LVMF

**LVMF :**

- D161-3" D625 3"o.c. \_\_\_\_" overall length
- D161-4" D626 4"o.c. \_\_\_\_" overall length



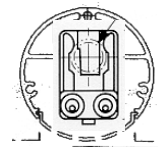
D162  
 LVT5

**LVT5:**

- D162 – 3" D139b - 3" o.c. \_\_\_\_' overall length
- D162 – 4" D139b - 4" o.c. \_\_\_\_" overall length

**LVT2**

- D163 – 8, \_\_\_\_" overall length
- D163 – 11, \_\_\_\_" overall length
- D163 – 13 \_\_\_\_" overall length



D163  
 LVT2



D116- D160 – D161 – D162 – D163 - 06.14.07 C