

# shop drawing

project specification

fixture type

D119 extrusion and lighting

Job Name:  
Job Nbr:  
Tag:  
Distributor:  
Electrician  
Engineer:  
Interior Design:  
Architect:  
note: site measurements required

#### Note:

Any Changes or modifications to mmj lighting 96 ltd lighting fixtures, must be done in the mmj lighting 96 ltd factory. Any modifications or changes done in the field will void all warranties and approvals.

Extrusion : D 119 - \_\_\_\_\_

typical socket assembly:

#### LVT5:

D186- 8, D186 - 14, D186-21  
D186-28, D186 - 35

#### LVMF

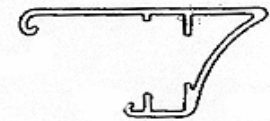
D187 [ D625 3" o.c. ]  
D187 [ D626 4" o.c. ]

#### LVTS:

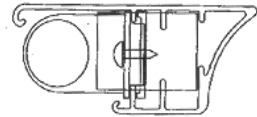
D188 - 3" [ D139b - 3" o.c. ]  
D188 - 4" [ D139b - 4" o.c. ]

#### LVT2

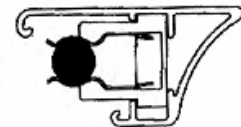
D189 - 8, D189 - 11, D189 - 13



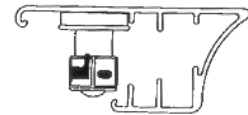
D119  
Extrusion only



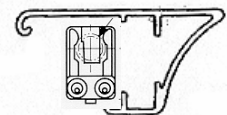
D186



D187



D188



D189

D119. D186. D187. D188. D189 1.20.04



150 ferrier street, unit 2, markham, ontario L3R 3K3  
T 905 479 0788 F 905 479 7117 E sales@mmjlighting96.com

[www.mmjlighting96.com](http://www.mmjlighting96.com)

**mmj**  
lighting 96 ltd