

shop drawing

project specification

fixture type D116 extrusion and lighting profiles D116 - 138 1 3/8" diameter , D116 - 175 1 3/4" diameter

Job Name:
Job Nbr:
Tag:
Distributor:
Electrician
Engineer:
Interior Design:
Architect:
note: site measurements required

Note:
Any Changes or modifications
to mmj lighting 96 ltd lighting
fixtures, must be done in the
mmj lighting 96 ltd factory.
Any modifications or changes
done in the field will void all
warranties and approvals.

extrusion number : D 116 - ____

overall length : ____ inches

typical socket assembly:

LVT5:

D160 - 8, ____" over all length
D160 -14, ____" overall length
D160 -21 ____" overall length
D160 -28, ____" overall length
D160 -35 ____" overall length

LVMF :

D161-3" D625 3"o.c. ____" overall length
D161-4" D626 4"o.c. ____" overall length

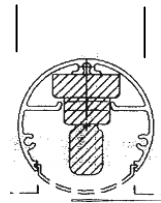
LVT5:

D162 - 3" D139b - 3" o.c. ____' overall length
D162 - 4" D139b - 4" o.c. ____" overall length

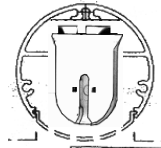
LVT2

D163 - 8, ____" overall length
D163 - 11, ____" overall length
D163 - 13 ____" overall length

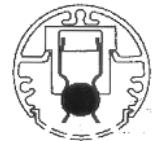
D116 - 138 1 3/8"
D116 - 175 1 3/4"



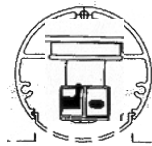
D116
Extrusion only



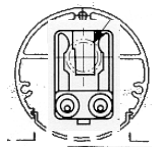
D160
LVT5



D161
LVMF



D162
LVT5



D163
LVT2



D116- D160 - D161 - D162 - D163 - 1-03-04 C