

project specification

fixture type **D187 LV Display cw D625 festoon series LV mini flex**

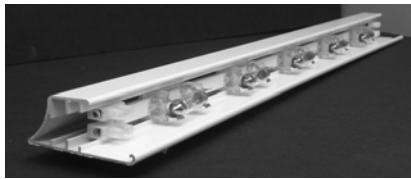
Job Name:
 Job Nbr:
 Tag:
 Distributor:
 Electrician
 Engineer:
 Interior Design:
 Architect:
 note: site measurements required

Note:
 Any Changes or modifications to mmj lighting 96 ltd lighting fixtures, must be done in the mmj lighting 96 ltd factory.
 Any modifications or changes done in the field will void all warranties and approvals.

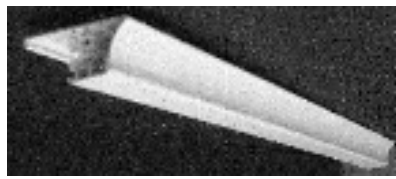
LV Display™

easy to hide , fluorescent or xenon

D119 extrusion © Patent pending



2.5"



← 1.0"

LV mini flex under cabinet illustrated with Lvmini flex sockets



Remote transformer:

D187-3" o.c.	5w24v-20w per foot,	3w24v-12w per foot - oal _____"
D187-4" o.c.	5w24v-15w per foot,	3w24v- 9w per foot - oal _____"
D187-6" o.c.	10w24v-20w per foot,	5w24v-10w per foot - oal _____"

Electronic transformer:

ET_____ remote electronic transformer.

ETH _____ electronic transformer housing.

Magnetic transformer:

TRF____wp____va____v remote magnetic transformer.

Integral electronic transformer:

D187-____" o.c.____w____v lamp____overall length.

for available transformers, breakers and enclosures refer to binder section 7.

D187 shop drawing 1-03-04 